



**Global Harmonization Working Party**

GHWP Towards Medical Device Harmonization

# Smarter MD Solutions, Smarter Hospital

**mindray** 迈瑞

Weiwei Dai



# Mindray at a glance

## Fueling Growth with 30+ years



Serving  
**190+**  
countries and regions

Over  
**17,000**  
employees from 30  
countries

Over **50**  
international  
subsidiaries around  
the world

**\$4.39 B**  
revenue in 2022

**#27**  
Global ranking by sales in  
2022

**10**  
R&D centers across  
the globe

**Europe**

**660+**  
teaching hospitals  
in Europe

**US**

**Top 20**  
hospitals in the U.S.

**9**

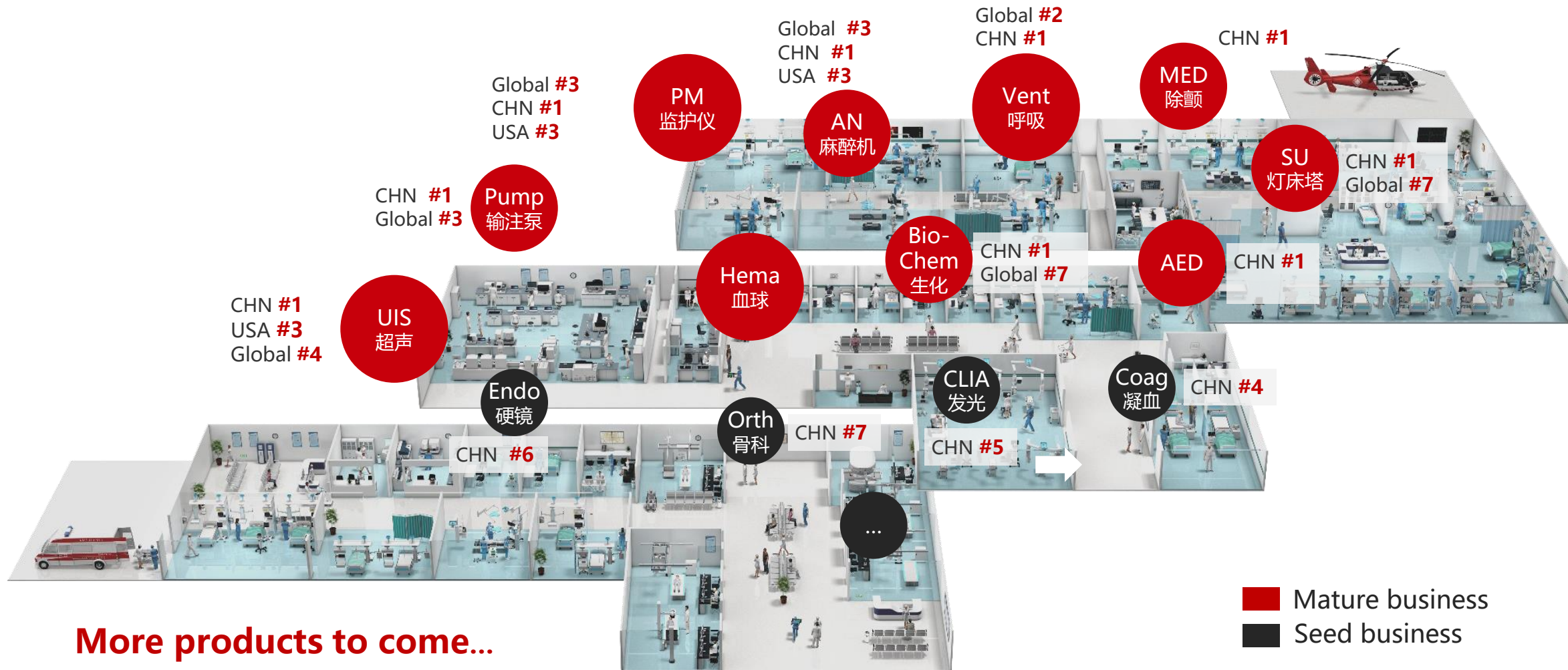
of top 10 cardiac  
hospital in the U.S.

**China**

**99%**  
of Tier 1 hospitals  
in China

# Mindray at a glance

## Wide-ranging, Competent Products and Solutions



**More products to come...**

# Mindray is Key Player in Building Smart Hospitals

## Intelligentization

Information Systems

HIS, CIS, LIS, PACS, EMR

## Smart Application Systems

Clinical decision support, IoT,  
telemedicine...

## Digitalization

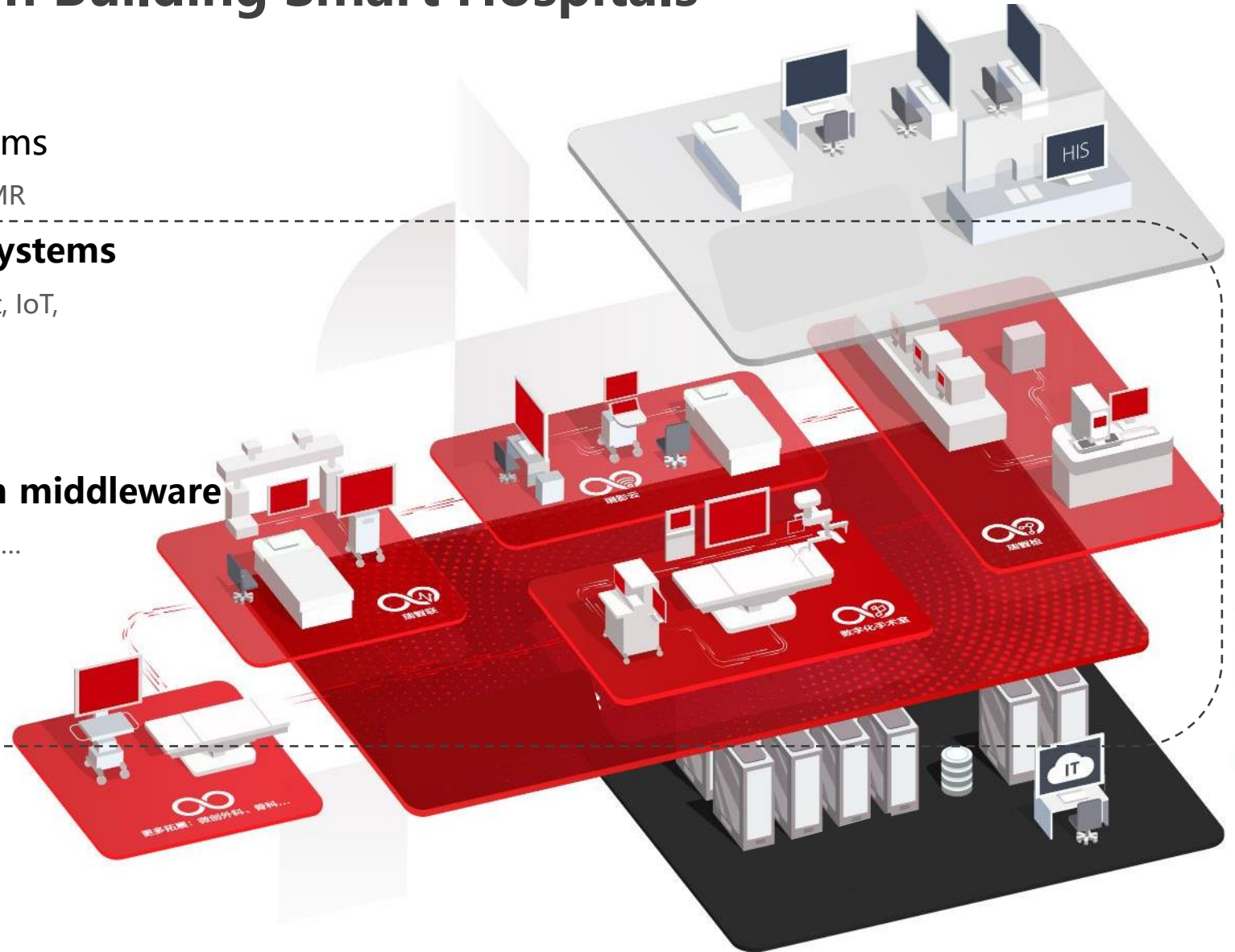
## Medical Devices & integration middleware

monitor, anesthesia, ventilator, ultrasound...

## Internet connectivity

IT Infrastructure

software, hardware



# Mindray Solutions for Smart Hospitals

Full connectivity for **increased clinical & business benefits**

Increased Benefits

**Better Patient Safety   Streamlined Workflow   Convenient Accessibility   Investment Protection**



PMLS **m-CONNECT**



MIS 



IVD **Mindray InnoLab**

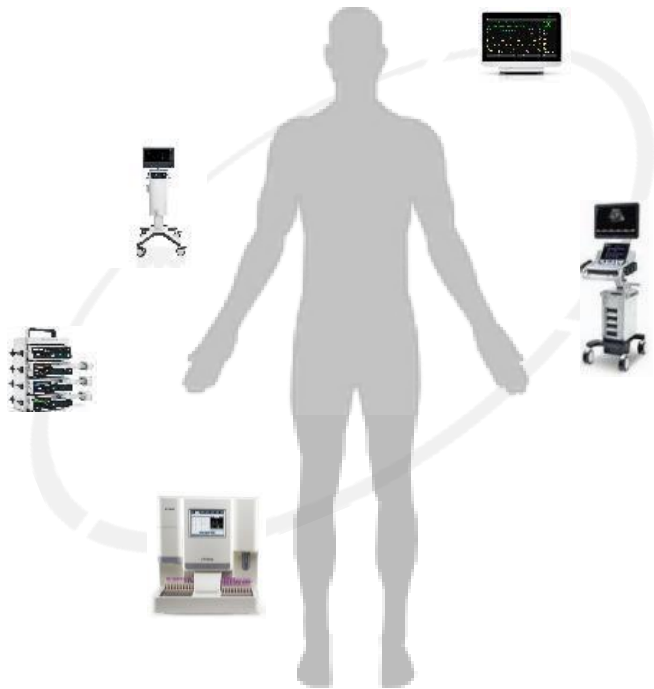


Devices Integration

# Devices Integration

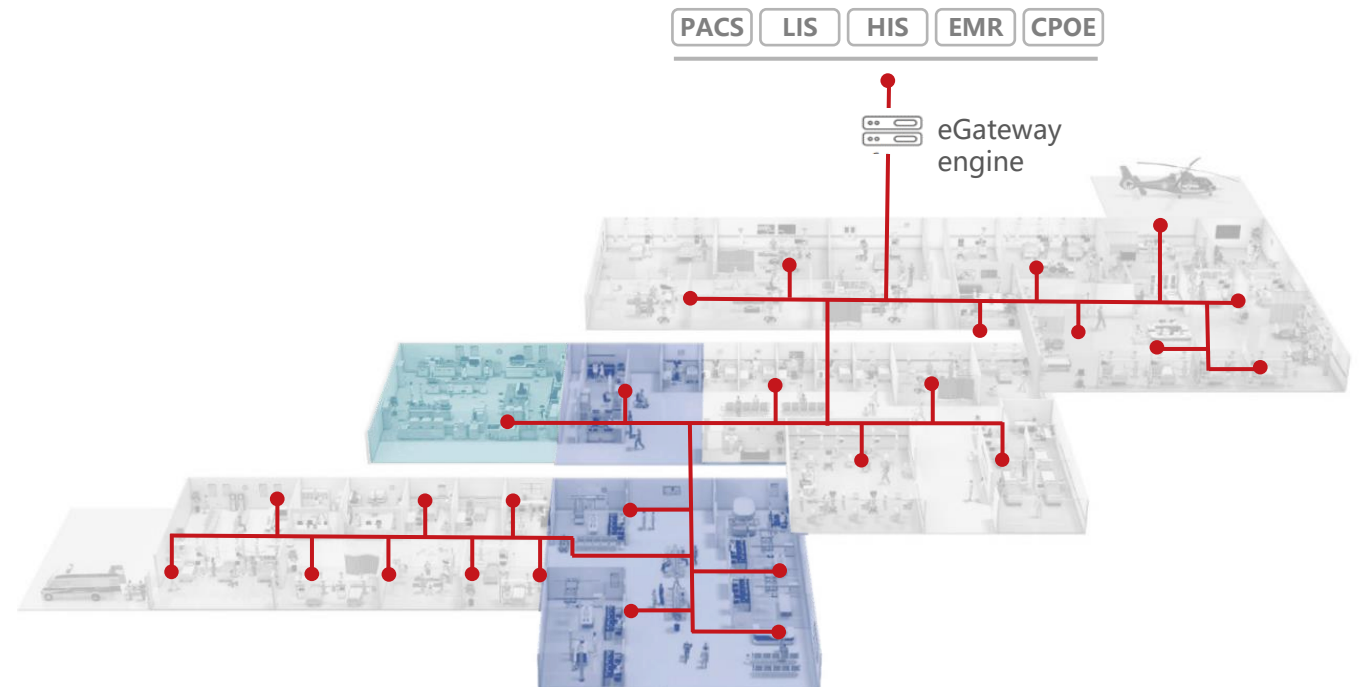
## Maximized patient-centric data integration

- Covers **300+** mainstream models
- Old models of Mindray & third-party devices supported



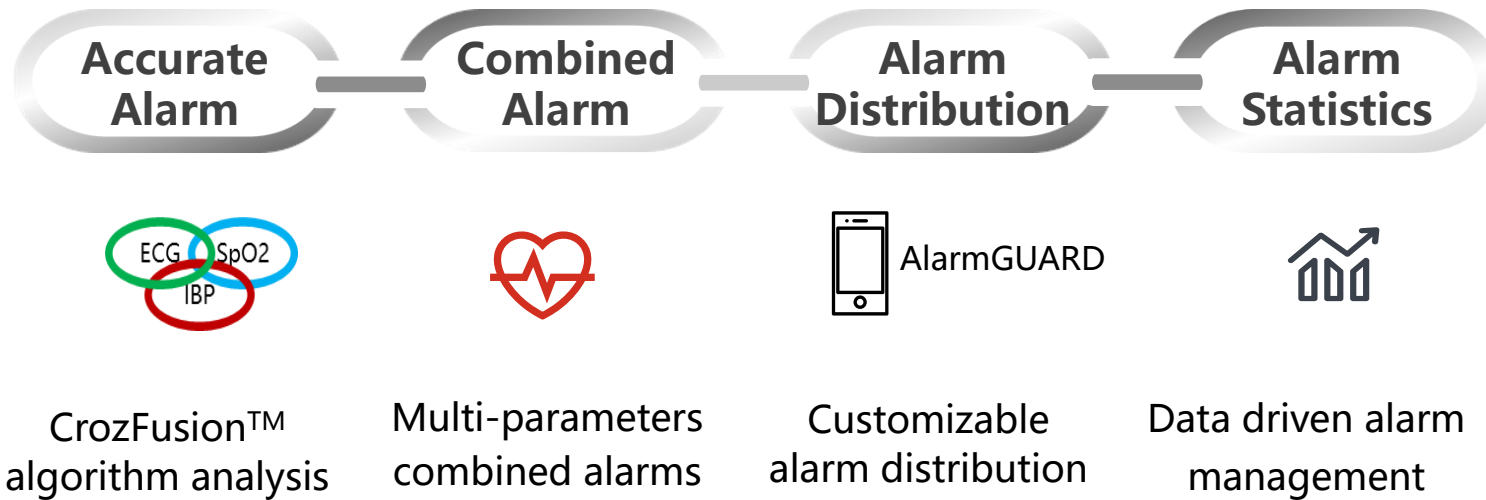
## Realtime data sharing with information systems

- Compatible with **hospital information systems**
- Allows real-time dataflow across departments, hospitals, regions



# Effective Alarm Management with **Intelligent Alarm Chain**

**iAlarm** Alarm accuracy  
Alarm response efficiency



The University Medical Center Göttingen (UMG)

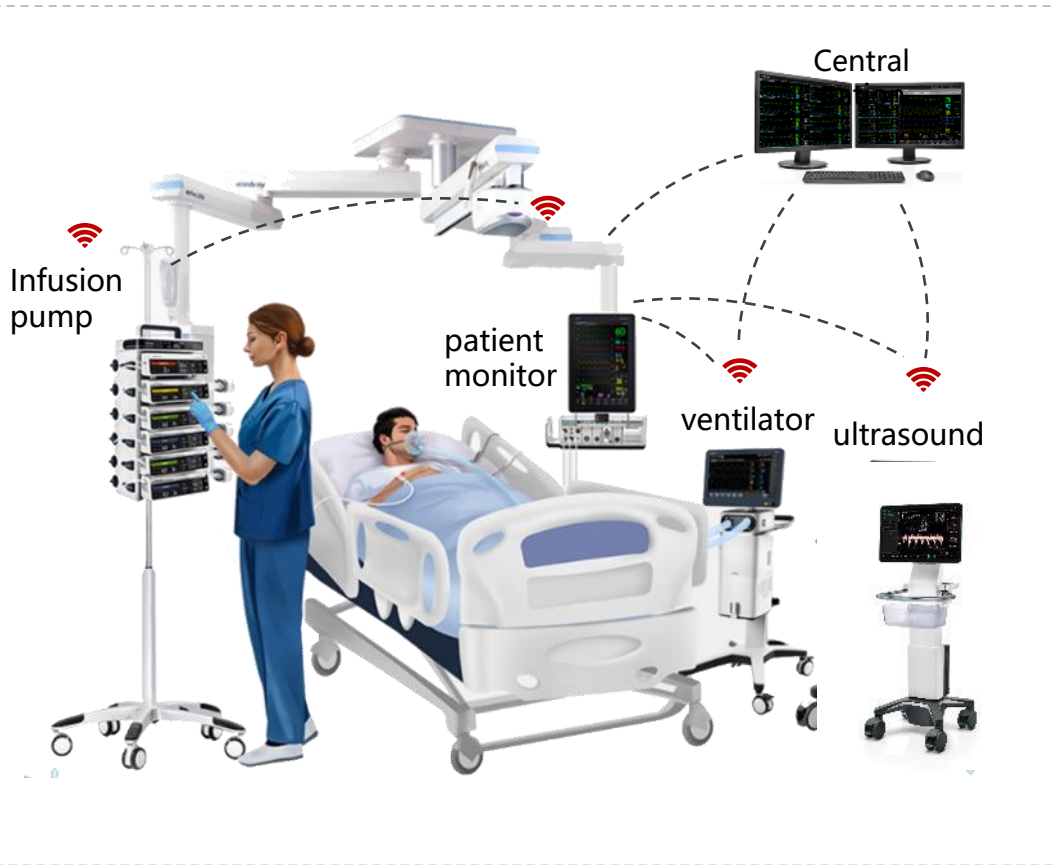


“Alarmguard helps us to **always keep an eye on all patients**, even when we’re not near the Central Station. ”

——Nurse of UMG

# Comprehensive Patient Data through **Bedside Devices Integration**

## ICU patient-centric devices integration



The screenshots demonstrate the integration of various bedside devices into a central patient monitor interface. The top screenshot shows a patient monitor displaying vital signs (HR 83, SpO2 97, BP 120/80) and pump status. The middle screenshot shows a ventilator interface with respiratory parameters (T1 36.5, T2 37.5, RR 18). The bottom screenshot shows an ultrasound interface with a heart image and vital signs (T1 38.6, SpO2 100, NIBP 96/57, RR 32, Resp 31).

Devices integration to patient monitor  
 More intuitive data display

Devices integration to POC ultrasound  
 More precise imaging



# Efficient Data Collection by Automatic Data Transmission

## Nantong No.1 People's Hospital, China

2,200 In-hospital patients, 34,200 groups vital signs to be recorded daily

### Before: manual record



### Now: Mindray solution



1. **Scan** patient ID
2. **Scan** QR code on patient monitor
3. Take **measurements**
4. Data **auto synchronized** to EMR

740 work hours — ↓ **648** → 91.6 work hours

≈ 92.5 nurses — ↓ **81** → ≈ 11.5 nurses

✓ **Less tedious work for staff**

✓ **More direct care to patients**

Streamlined Workflow

**mindray**

# Easy Access to Patient Data with **Distributed Patient Monitoring System**



Infusion pump    Transport Monitor



Ventilator    Anesthesia machine



Defibrillator    Telemetry



bedside monitor

- Real-time remote monitoring of complete patient data.
- Bidirectional interoperability of devices.



Mobile Viewer



CMS Viewer



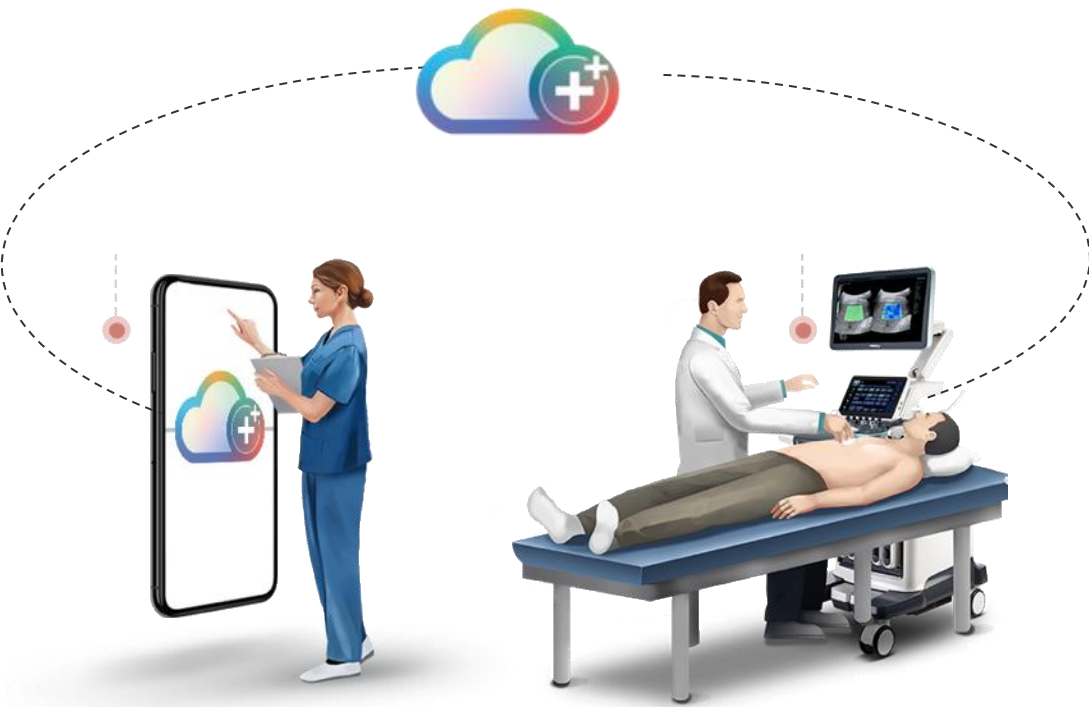
Central Station



Work/View Station

# Powerful Medical Image Community with **MiCo+**

MiCo+ : Mindray Image Community Evolutionary



----- **Values** to explore -----

Remote collaboration



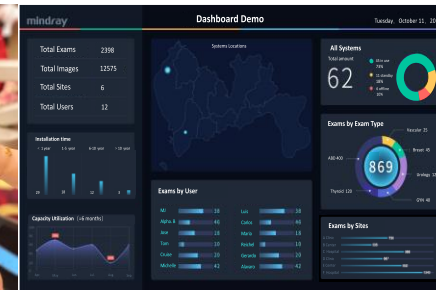
Remote **consultation**  
Remote **guidance**  
Branch **synergy**

Training and teaching



Online **training**  
Workshop **demo**  
Online **review**

Operation management

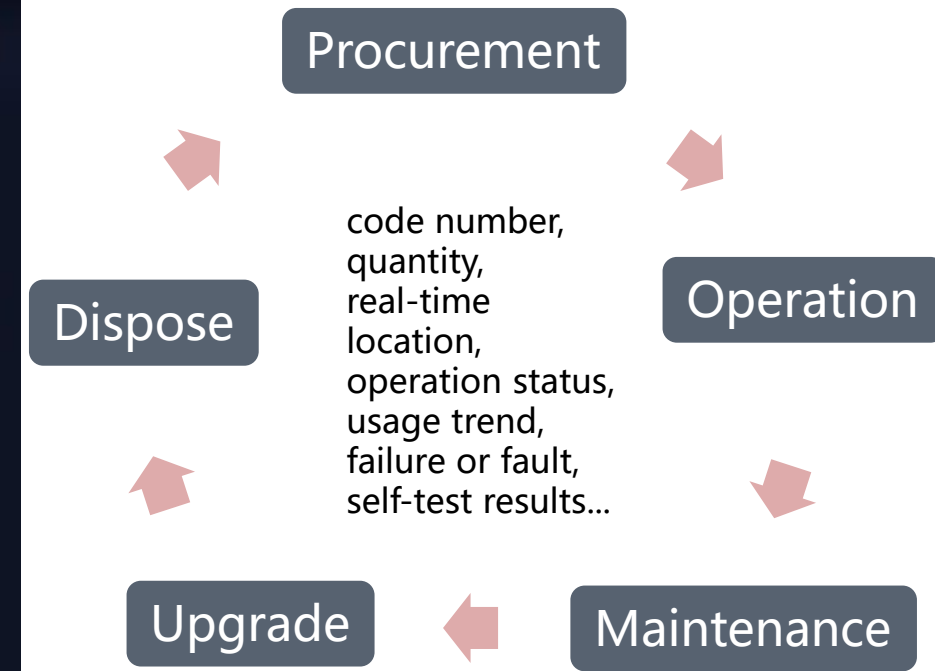


Operation **data**  
Exam **information**  
**Teamwork**  
management

Convenient Accessibility

**mindray**

# Educated Life-cycle Management of Devices with M-IoT Dashboard



# Customizable Solutions to Unlock More Potential for Your Facilities



Augusta-Bochum Mitte Hospital, German



Basildon University Hospital, UK



Centre Hospitalier de Libourne, France



SJD Barcelona Children's Hospital, Spain



Toulouse University Hospital, France



Medical Park, Turkey



Tor Vergata General Hospital, Italy



Royal Papworth Hospital, UK



Asan Medical Center, Korea



Siloam Hospitals, Indonesia



Medanta - The Medicity, India



Peking Union Medical College Hospital, China



University Hospital Leuven, Belgium



Liverpool Hospital, Australia



CientificaLab, Brazil



Hospital Albert Einstein, Brazil



Hospital Angeles, Mexico



.....



**Global Harmonization Working Party**  
GHWP Towards Medical Device Harmonization

Thank you!

